

# Nursing Education Data 2016

## PRE-LICENSURE RN PROGRAMS IN CT

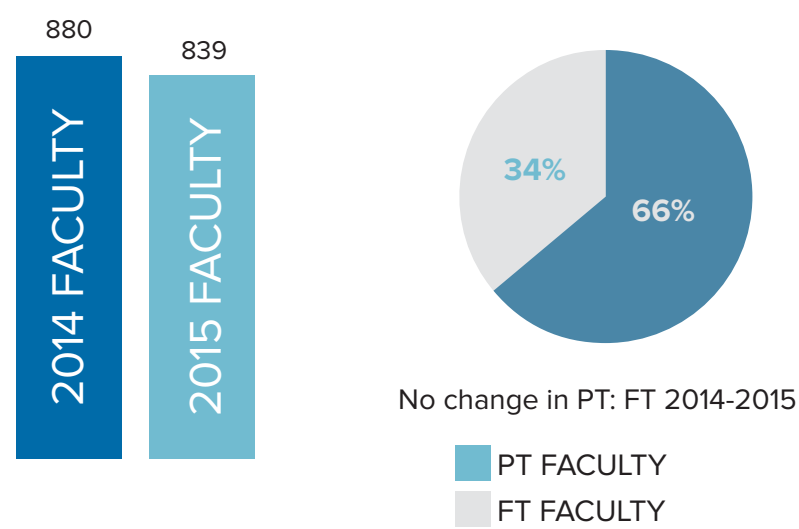
# RN

### 1791 PRE-LICENSURE NURSING GRADUATES

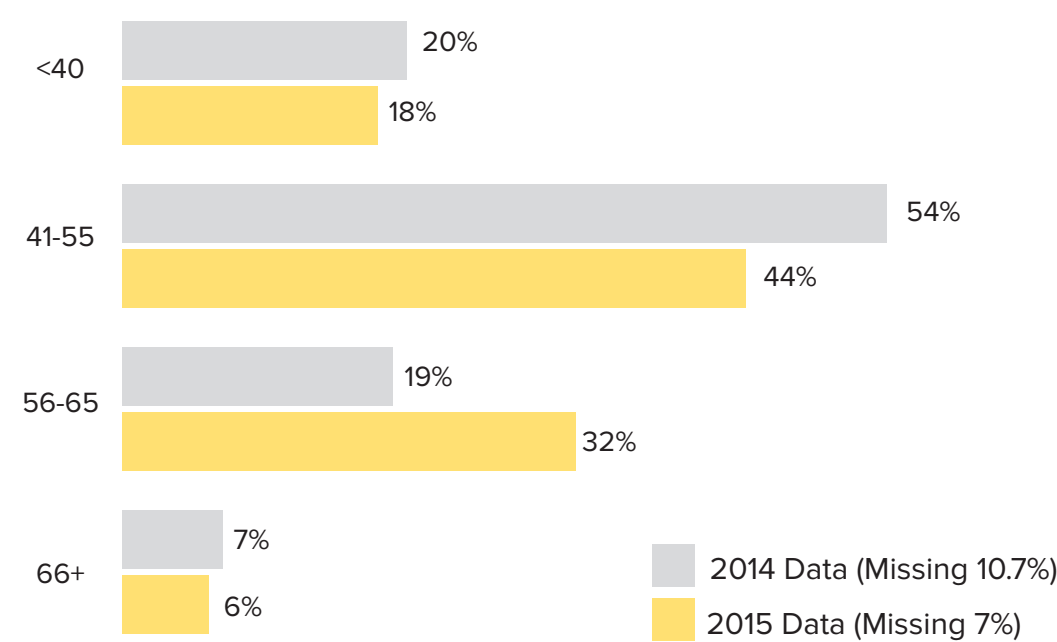
WHO ARE PREPARED TO TAKE THE NCLEX-RN EXAM TO BE EMPLOYED IN ENTRY-LEVEL RN POSITIONS  
(2014 PRE-LICENSURE NURSING GRADUATES = 1727)

taught by **839** FULL-TIME & PART-TIME FACULTY

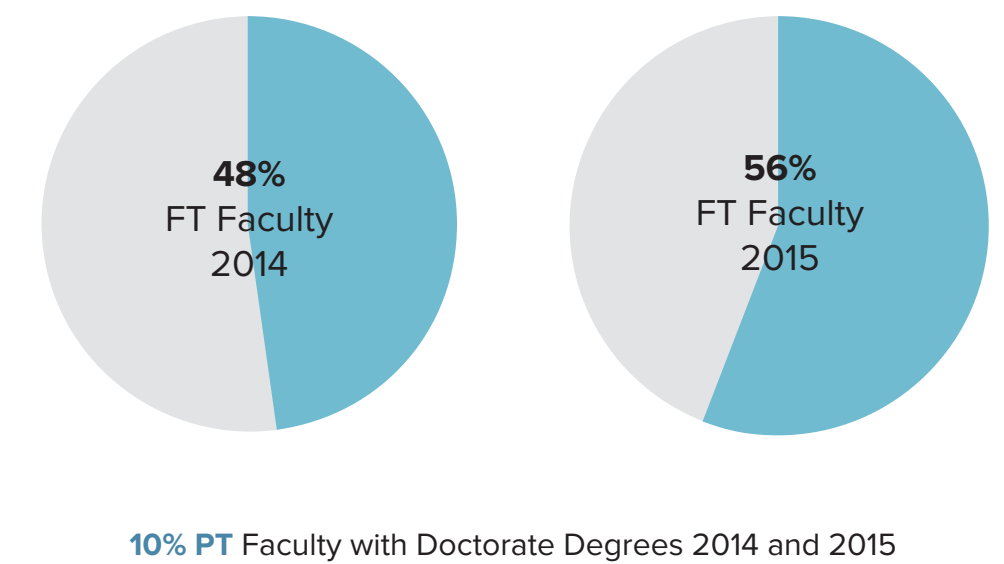
#### NUMBER AND PERCENTAGE OF FACULTY (PT AND FT)



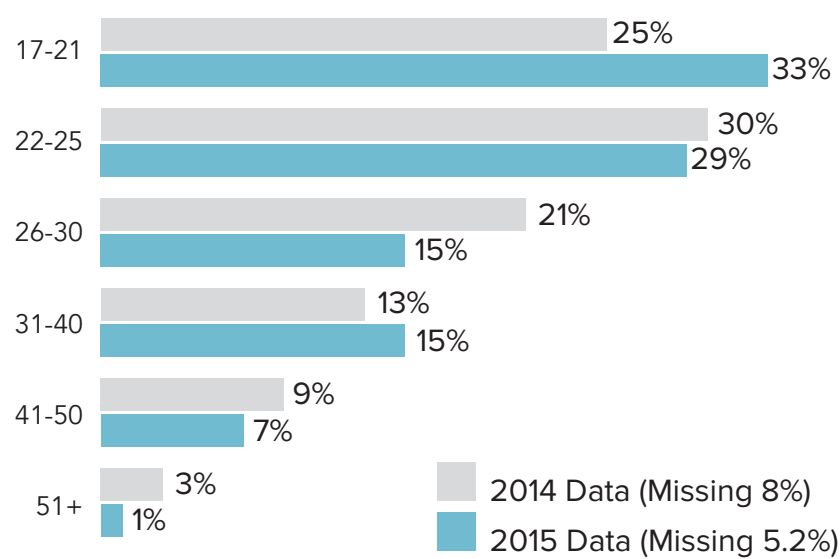
#### FACULTY AGE (FT AND PT)



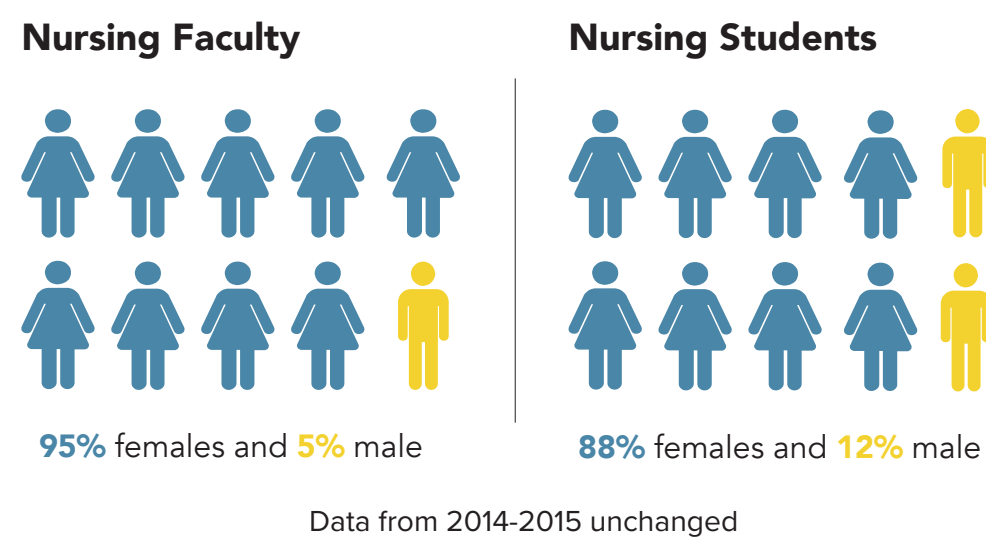
#### FACULTY WITH DOCTORATE DEGREES



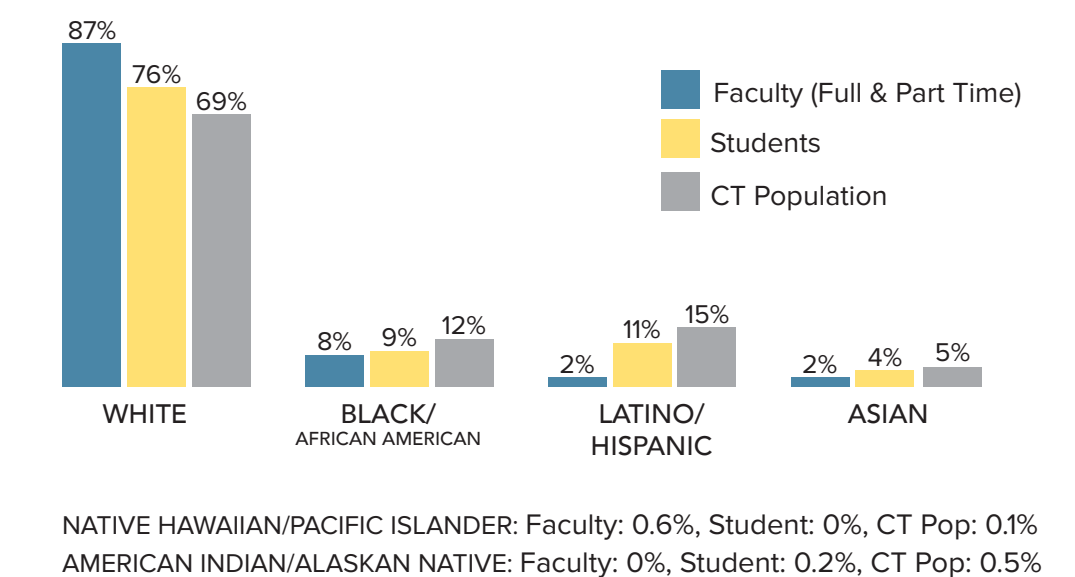
#### STUDENT AGE



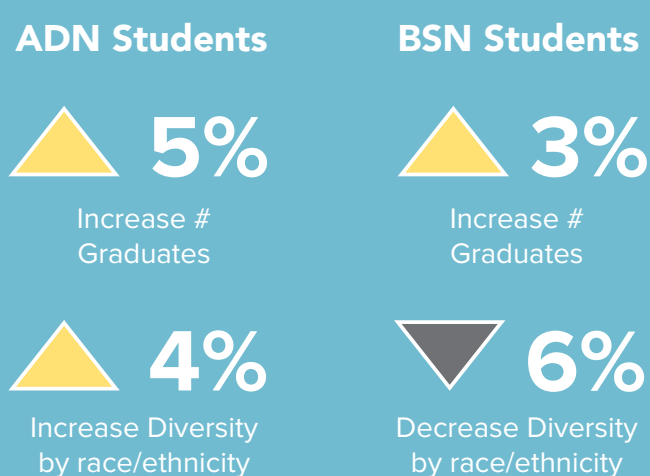
#### GENDER OF NURSING FACULTY AND STUDENTS



#### RACE/ETHNICITY OF FACULTY, STUDENTS AND STATE POPULATION

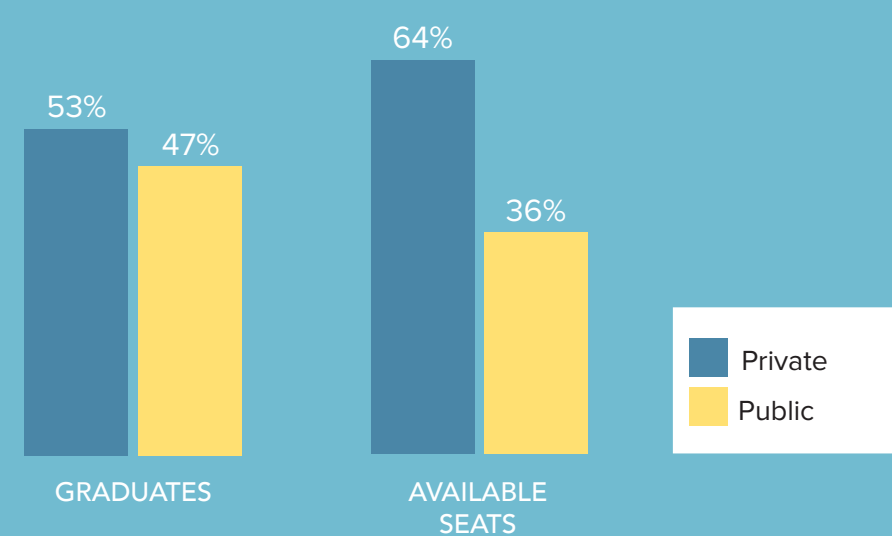


#### ADN AND BSN STUDENTS CHANGES SINCE 2014



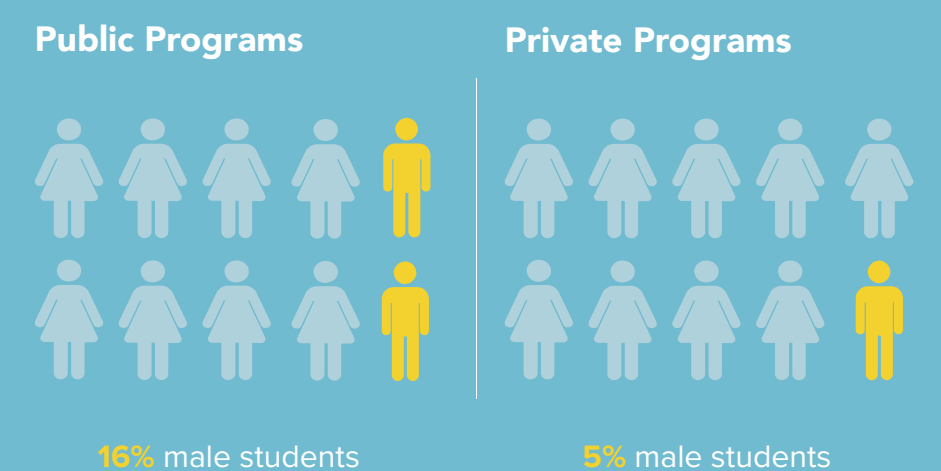
Critical imperative to increase diversity of nursing students prepared to advance to the masters and doctoral levels to replace retiring faculty

#### PUBLIC AND PRIVATE GENERIC BSN PROGRAMS



Robust faculty pipelines and hiring practices are needed in private and public programs to prepare enough BSN students for a complex healthcare system.

#### MALE STUDENTS IN GENERIC BSN PROGRAMS



Public and private programs need to attract, recruit and retain male nursing students for the BSN entry into nursing

2016 Analysis based on 2015 data sourced from the Connecticut Department of Public Health for the Connecticut schools and programs of nursing utilizing the National Minimum Dataset (MDS) for Education recommended by the National Forum of Nursing Workforce Centers.

Made possible by:



Connecticut Nursing Collaborative Action Coalition



THE NATIONAL FORUM OF STATE NURSING WORKFORCE CENTERS



UConn SCHOOL OF NURSING